

The New Pattern for Success

Living System Life and Work

Part 2 - 6

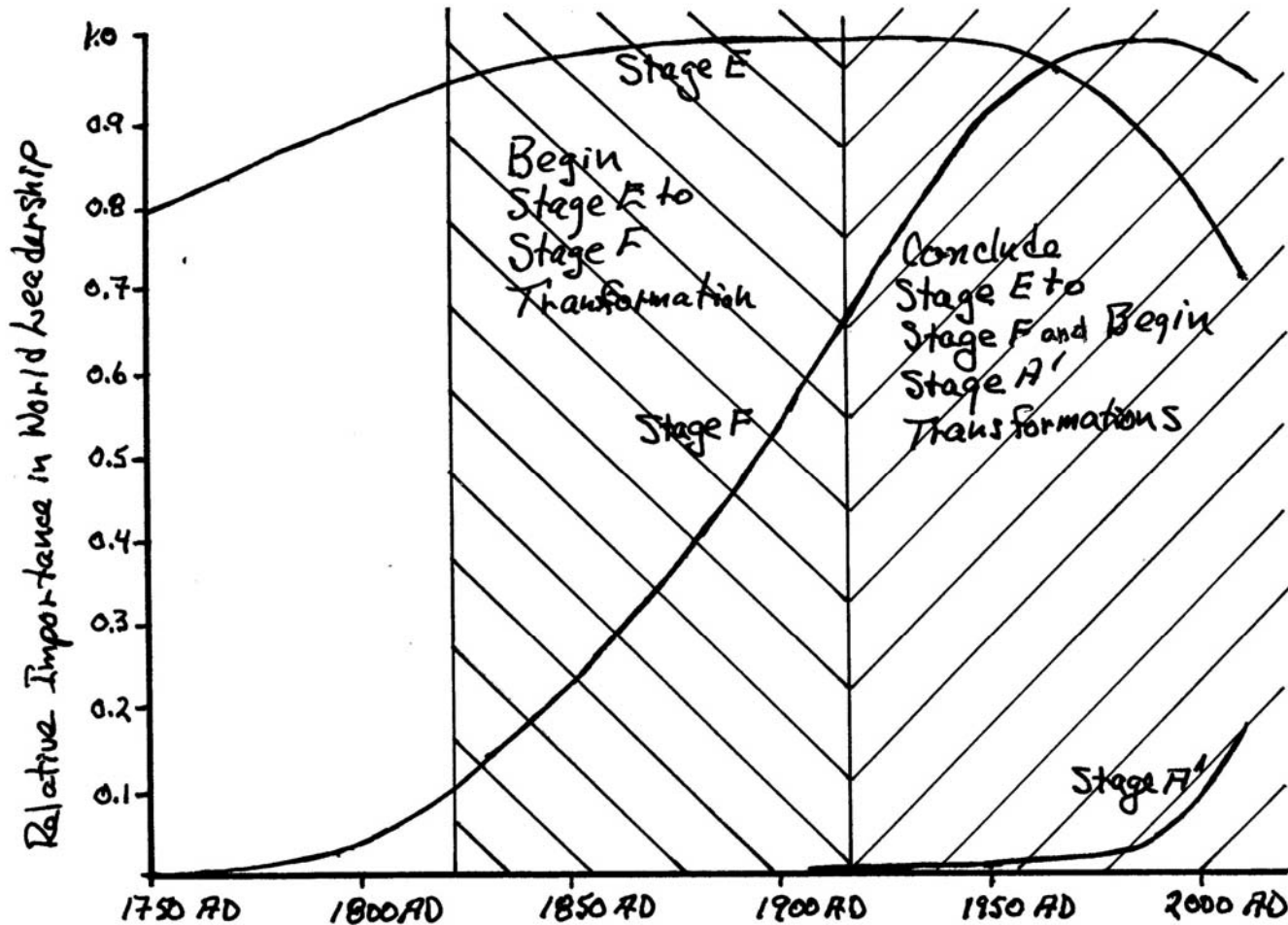
Mega-Force 1

The human transformation
to living system life and business

Cycle 3 Life

Stage E

Human Psyche Stage World Leadership and Transformation Eras



Cycle 3 Descriptors - Western

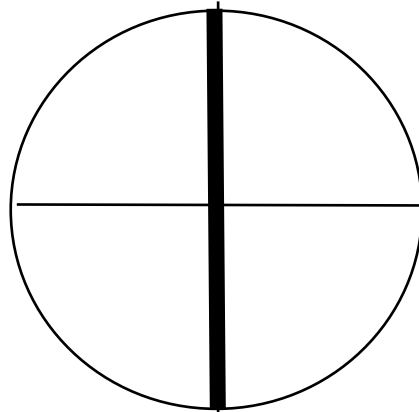
- **Stage E – Emerges as Independent, Objective, Rational,, Linear with Mechanistic Machine-Like Concept of Life**
- **Stage F – Emerges as Dependent, Subjective, Intuitive, Non-Linear with Anti-Mechanistic Social Concept of Life**
- **Psyche System Splits into Two Mirror Image Varieties**
 - Western Man and Eastern Man
- **Western Man Focus on Objective Outer World at Stage E**
 - Focus on Subjective Inner World at Stage F
 - Eastern Focus is Opposite
- **Western Man “Walls Off” Conscious to Strengthen It at Stage E**
 - Then Consciously Discovers Unconscious at Stage F
- **Life Dominated By Issues of Personal Independence and Intellectual, Political, Legal and Material Power – Their Use and Control**

Cycle 3 Descriptors - Western

- **Stage E – Peak of Phase 1 Life**
- **Stage F – Preparation for the Greatest Transcendent Leap in Human History to**
 - **Phase 2 Life – Stage A’**
The Beginning of Living System Life and Work

Cycle 3 Psyche System Symbols

Personal

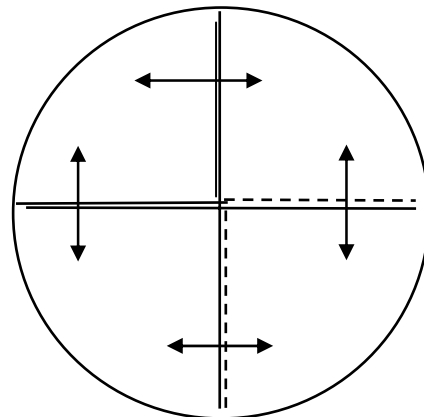


Collective

Stage E

**Conscious “Walled Off”
Strengthened**

Personal



Collective

Stage F

**Unconscious Discovered
Psyche System Begins to Re-Open**

Conscious

Unconscious

Paradigm – Stage E – Western

Linear, 1st Renaissance – Early Adult

- Emerged – ~800 AD to 1000 AD
- World Leader – ~ 1500 AD to Now Declining
- Behavior – Linear, Rational, Objective, Quantitative, Materialistic, Competitive, Self-Serving, Secular, Legalistic, “Scientizied”
- Learning – Expectant Learning with Moderate Delay and Risk of Failure. Linear, Highly Segmented, Specialistic, Mechanistic, Reductionist
- Action Basis – End-Point Goals & Measures of Success – Conscious, Pragmatic, Objective Laws of Nature, Separate Self Interest, Win by Survival of the Fittest Competition
- Psyche Disease – Manic/Depressive Anxiety, Neurosis & Psychosis – Insanity of Conscious Excess
- Psyche Pattern – Phase I, Cycle 3, Individual Centered

Paradigm Summary – Stage E – Western

Linear, 1st Renaissance – Early Adult

Personal Paradigm

- **Self as Independent Being, Objective, Intellectual, Rational, Quantitative, Self-Sufficient, Materialistic, Competitive**
- **Life is Outer World Quest for Opportunity – Manipulate and Control Nature, Resources, People for Personal Gain**
- **Drive to Achieve Material Quantity in Everything as Measure of Self- Esteem and Status to Prove Independence**
- **Scientific/Technical Specialist Knowledge – Linear, Conscious, Highly Segmented Professional Disciplines**
- **Religion is Secularized – Separate Part of Life**
- **Relationships – Patriarchal, Highly Genderized, Emotionally Alienated, Personal Advantage**
- **Salvation to be Won in This Life Through Independence, Professional/Political/Social Power, Material Possessions**

Stage E – Western – Thought - Descartes

Descartes' method is analytic. It consists in breaking up thoughts and problems into pieces and arranging these in their logical order. ...

It has become an essential characteristic of modern thought...(of linear thought)

**Fritjof Capra
*The Turning Point***

Stage E – Western – Thought – Descartes

Overemphasis on the Cartesian method has led to fragmentation that is characteristic of ... our general thinking and our academic disciplines ... and attitude of reductionism in science ...

...the belief that all aspects of complex phenomena can be understood by reducing them to their constituent (separate) parts.

Fritjof Capra
The Turning Point

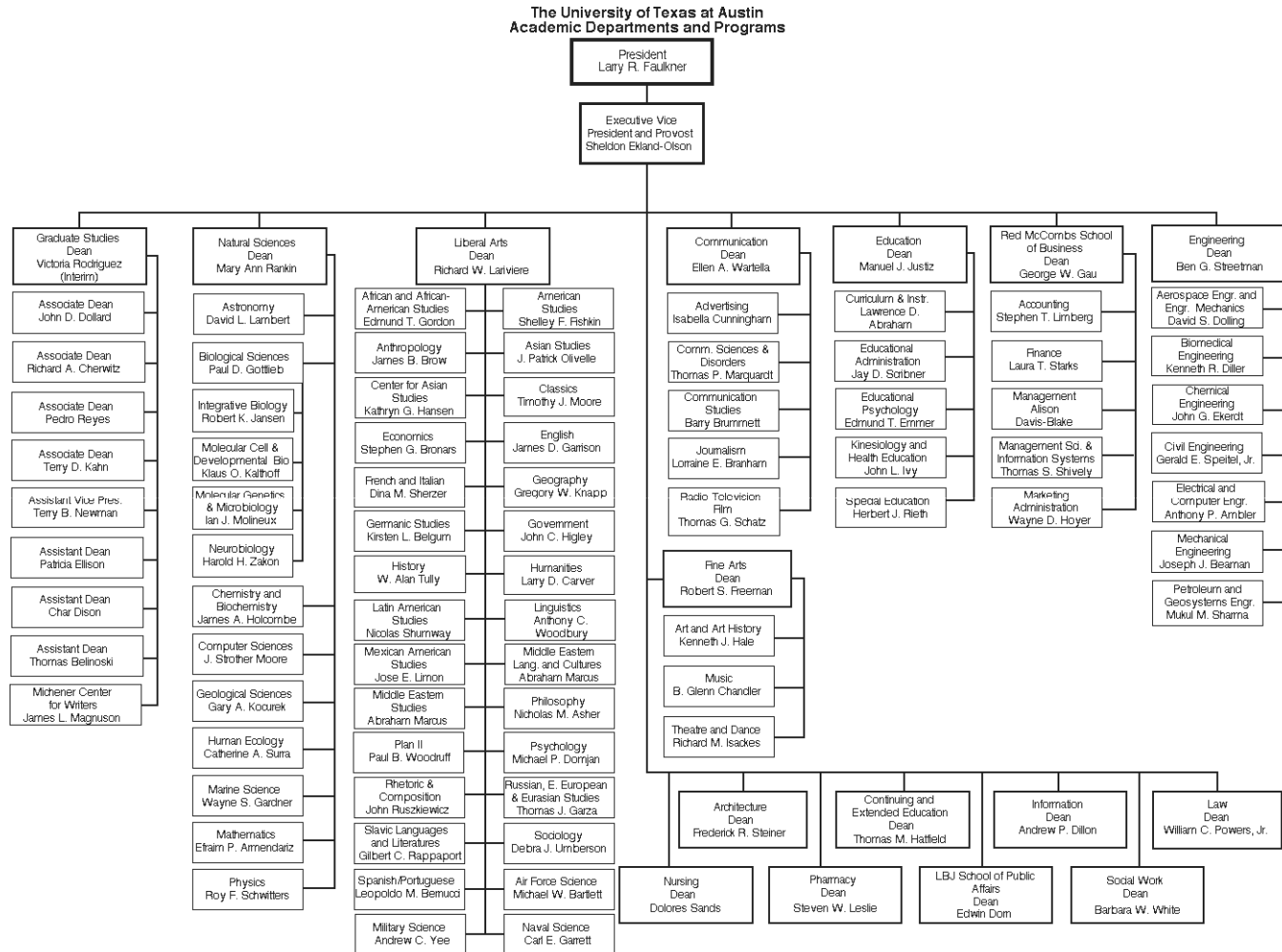
Paradigm Summary – Stage E – Western

Linear, 1st Renaissance – Early Adult

Collective Paradigm

- **Leadership by Functional Specialist Skills, Command & Control Administration, Vertical Hierarchy, Single Chief Executive, Formal Chain of Command, Separated Line and Staff, Authority Defined by Job Position**
- **RHIP (Rank Has Its Privileges) Social Structure, Information Flows Upward, Decisions and Commands Flow Downward**
- **Organized as Streamlined, Secular Version of Medieval Church Bureaucracy, Machine-Like, Pyramidal, Technocratic, Functionally Divided, Formal Division of Power**
- **Linear System Science is Dominant (Almost “Religious”)**
- **Invented Materialistic, Technocratic, Nation State Society – Nations Compete by Political/Economic/Military Conflict**
- **Multi-National Corporation and Nation State Are its Highest Business and Political Forms**

Stage E – Western – Organization



Linear Organization Chart

Paradigm Summary – Stage E – Western

Linear, 1st Renaissance – Early Adult

- **Motivation – Become Independent – Freedom to Win Without External Evaluation, Interference or Control – Believe Objective Truth Exists**
- **Mission – Gain Independence and Achieve Worldly Goals Through Rational Intellect and Material/Political/Social Power**
- **Ends Valued – Achieve Goals for Independence, Status, Material Possessions and the Power that Results from Them.**
- **Means Valued – End-Point Goals – Conscious Knowledge, Rational Thought, Ambition, Linear Science Method, Competitive Self-Interest, Hard Work, Politics, Legal Coercion and Force**
- **Life Theme – Live by Rational, Industrious, Self-Sufficient, Goal Driven Actions to Win in a World of Competitive Opportunity**